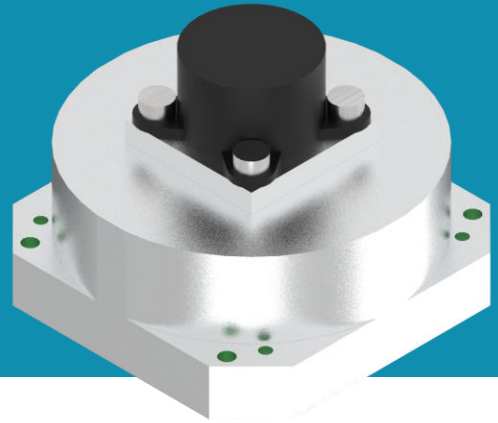


KU Leuven RW

Compact Reaction Wheels for CubeSats

The KU Leuven Reaction wheels allow to accurately control the attitude of CubeSats. The wheels have been lifetime tested for a 3 year lifetime and have the required torque and momentum capacity for typical 3U CubeSat missions. Their compact design and easy interface facilitate integration in any satellite.



RW Features

Performance

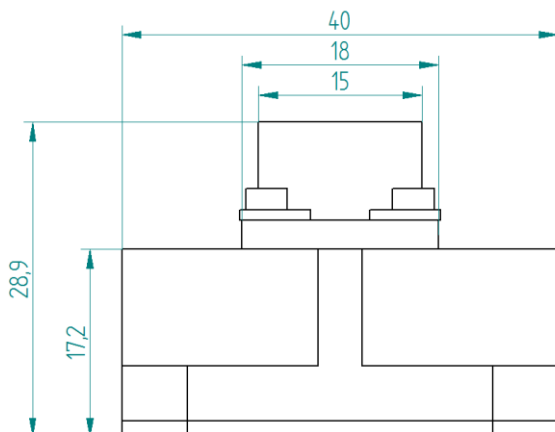
- Torque: 0,5 mNm
- Momentum Capacity: 4mNms @ 4000 rpm

Power Consumption

- 200 mW @ 1000 rpm
- 600 mW @ 4000 rpm

Qualification

- Vibration tested for wide range of launchers
- Thermal vacuum tested
- Lifetime tested in vacuum



- ✓ Suitable for up to 3U CubeSats
- ✓ Lifetime tested (+3 years)
- ✓ Easy interfacing



Interface

- +5V
- Speed setting through PWM
- Dimensions: 40x40x28,9(17,2) mm³